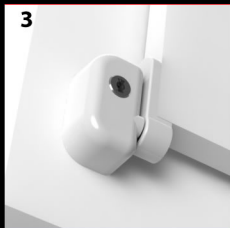
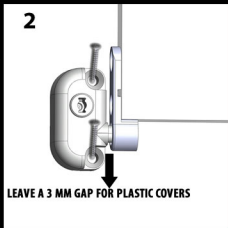
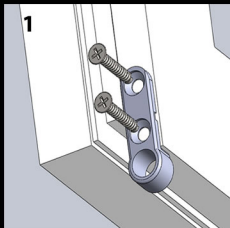




# Pentilt



- A BODY
- B COVER
- C KEY
- D STRIKER
- E COVER
- F SCREWS



- EN** 1- Position the striker on the corner of sash and screw.  
2- Position the body next to striker as the locking mil inside the striker's hole. Leave a 3 mm gap between the body and the striker for plastic covers and screw.  
3- Clip plastic covers.